

LEADING REGENERATION

Geistlich
Biomaterials

Geistlich biomaterials 'Partner products'



Yxoss CBR®

Customised Bone Regeneration



Customised bone regeneration

Yxoss CBR®

ReOss® provides solutions for customised bone regeneration. Patient-specific titanium mesh scaffolds are manufactured utilising modern CAD / CAM technology and delivered tailored to precisely fit the defect.

The combined use of customised bone regeneration – Yxoss CBR®, Geistlich Bio-Oss® and Geistlich Bio-Gide® can expand your treatment spectrum to include the indication of the horizontal and vertical combined defects.

Yxoss CBR® – customised solutions for complex bone defects

Individually made Yxoss CBR® mesh scaffolds provide the augmentation site with previously unmet stability, ideal for the treatment of complex 3D bone defects. The Yxoss CBR® mesh structure allows undisturbed bone healing, free from compressive loads and other physical influences. With the patented manufacturing process for the preparation of individual patient solutions, ReOss® provides high quality individual products for 'custom bone regeneration.

Yxoss CBR® technology unites function and design for success

- **Custom-fit and tissue compatibility**
- **High stability during the healing phase**
- **Predefined augmentation volume**
- **Simple fixation and easy removal (Easy Removal Design®)**
- **Reconstruction of original anatomical shape**
- **Easy use and significantly shortened operating time**
- **For regeneration of complex bone defects**

Visit www.reoss.eu for more information or to place your first order.

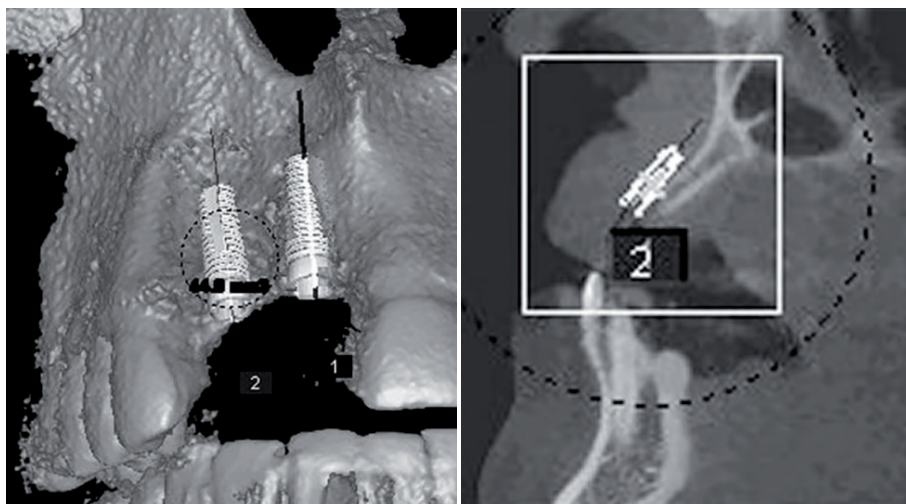
Yxoss CBR® – An Exclusive Geistlich Partner Product



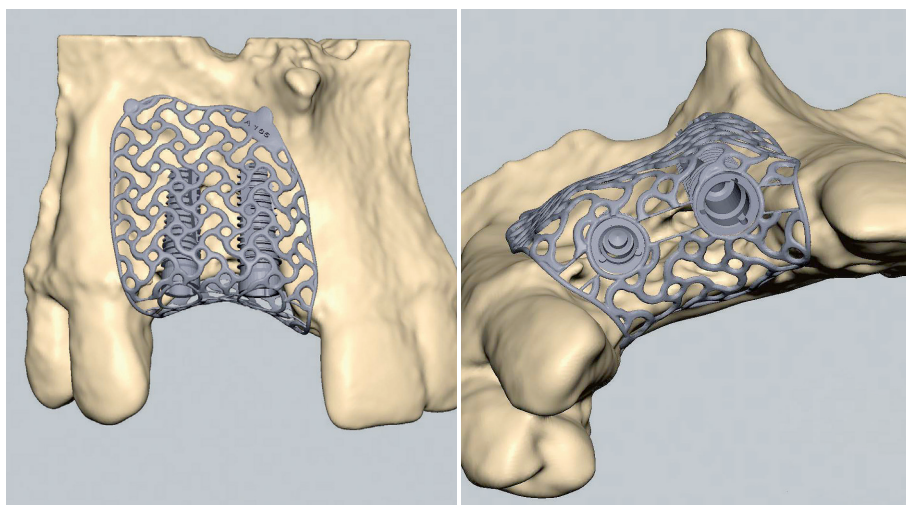
		Price € '1
Yxoss CBR® Area of defect	Augmentation in area of 1 tooth	295.00
	Augmentation in area of 2 teeth	395.00
	Augmentation in area of 3–4 teeth	495.00
	Augmentation in area of 5–7 teeth	595.00
	Entire Jaw Area	795.00
Augmentation volume:	The augmentation volume will be calculated free of charge by ReOss	FREE
Backwards planning	Per implant	50.00
Packing and shipping to the UK		55.00

Yxoss CBR[®] Backward

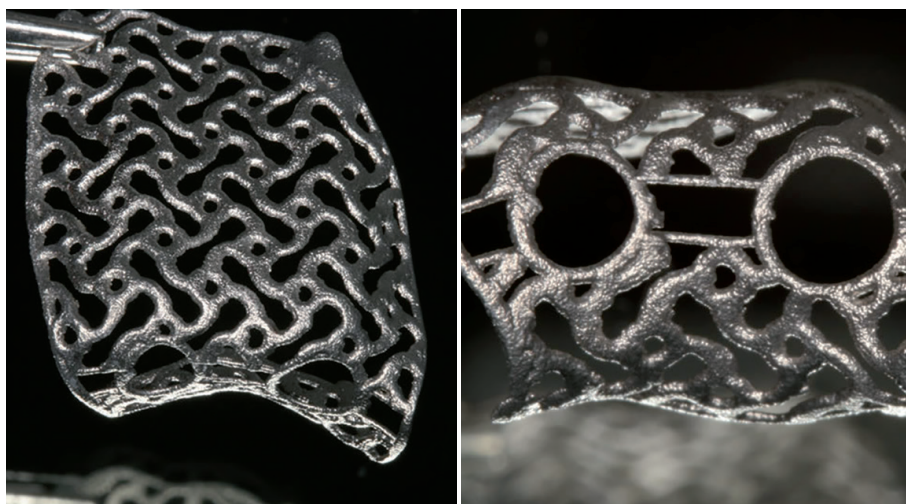
Have you ever customized the regenerative procedure together with a surgery guide for the correct three-dimensional implant positioning? Now, this is possible with Yxoss CBR[®] Backward.



ReOss[®] offers the option of integrated implant positioning in the surgical planning. By ordering 3-D designs for Yxoss CBR[®] you can also order the 3-D implant positioning for using the Yxoss CBR[®] scaffold as a surgical guide for implant placement.



You will receive the digital proposal for the digital 3-D design with the opening provided for future positioning of the implant pilot drill. After sending your design approval to ReOss, you will receive Yxoss CBR[®] scaffold for sterilization and implantation.



During simultaneous approach or at the time of reopening, Yxoss CBR[®] Backward with its pre-existing openings, can serve as your surgical guide for the positioning of the implant pilot drill. Further implant insertions steps can be performed after the removal of the scaffold.

Membrane fixation

Precision systems for membrane fixation

Guided bone regeneration (GBR) is based on the combined use of a bone substitute, such as Geistlich Bio-Oss® and a barrier membrane, Geistlich Bio-Gide® which has the dual purpose of:

- **Isolating the hard tissues from the soft tissues, avoiding the infiltration of fibroblasts into the defect area.**
- **Immobilising the bone substitute to stabilise the graft, optimising the formation of new bone.**

For optimal healing it is essential to avoid micro-movements of the biomaterial – clot – membrane system. Fixing the membrane using a mechanical system can be a suitable option to help achieve this stability and improve long-term outcomes.

The 'Tufftack' – Precision system for membrane fixation



The Tuff-Tack Line is the answer to all membrane fixation needs in both the jaw bone and mandible. Having been designed and developed with focus on the study

of biocompatibility, the line uses only the highest quality of surgical grade materials. The tacks are fabricated of titanium alloy (TiGr5 according to ASTM F136) and the body of the tack applicator is manufactured in Aeronautical Alloy ASTM 7075. The kit tray is made of a special polymer, resistant enough for sterilization temperatures, provides maximum rigidity, and yet still allows delicate enough protection to prevent surface ruination for the precision tools.

The Tufftack Tack System is composed of titanium pins and a kit of tools that allow for fast and effective application,



allowing the membrane to be fixed in a simple way and enabling proper cleaning, disinfection and sterilisation of the instruments after use.

The Tufftack Set consists of: Holder, applicator and organiser.

Tack LC 3.0 : Titanium pins (pack of 10 pieces), dimensions: 3.0 X 2.5 mm (sold separately)

Tufftack Set Includes holder, applicator and organiser 1 KIT **£299.99**

The 'Supertack' – The answer for top surgeons.



The Supertack line represents the "answer" to the top surgeons demanding Excellence in ergonomic design. The Supertack includes a hammer with precisely balanced weight and a surgical

stainless steel applicator. Contained in a sterilised blister, the tacks can be positioned in the weighted and dynamically stable design of the stainless steel organiser.

The Supertack Set consists of: Holder, applicator and organiser and hammer.

Tack LC 3.0 : Titanium pins (pack of 10 pieces), dimensions: 3.0 X 2.5 mm (sold separately)



Supertack Set Includes holder, applicator, organiser and hammer. 1 Kit **£399.99**

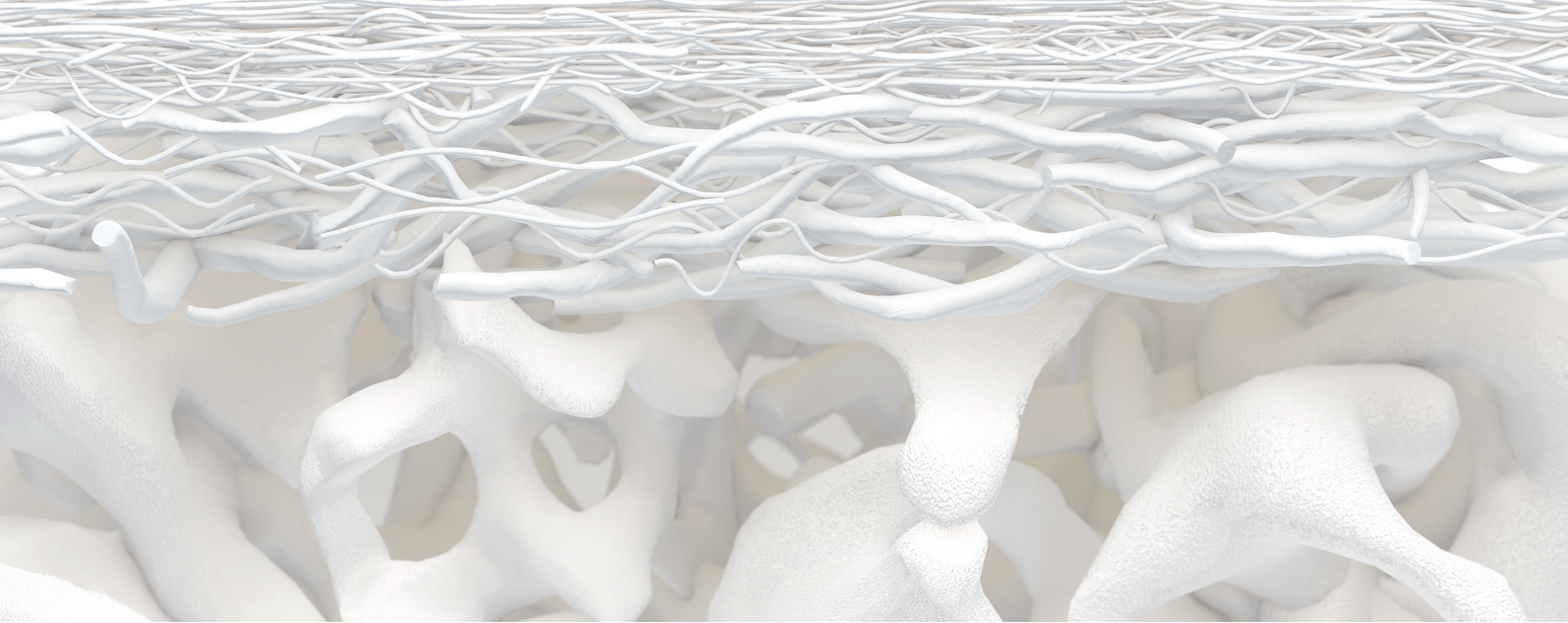
Tufftack 3mm Tacks (10) Pack of 10 **£81.20**

Hammer Spare/replacement hammer 1 item **£79.99**

Short applicator tip Spare replacement short applicator tip 1 item **£39.99**

Long applicator tip Spare/replacement long applicator tip 1 item **£42.99**

¹ All prices are correct of 1st Jan 2019 and are applicable until 31st December 2019. Prices exclude VAT and delivery



Bone Harvesting instruments

The SafeScraper® TWIST

Combining Versatility and Flexibility

The SafeScraper® TWIST provides an easy method for harvesting autogenous cortical bone, for use in grafted sites with a minimally invasive technique.

Its curved tip facilitates easy access to donor sites which makes The SafeScraper® TWIST the ideal device for both minor and major harvesting procedures. Collected bone shavings are mixed with blood, which can be combined with Geistlich Bio-Oss® or Geistlich Bio-Oss Collagen® to ensure volume preservation.



Minimally Invasive with Maximum Access

- **Accelerates harvesting time**
- **Excellent control during the harvesting procedure**
- **Effective on any bone surface (plane, concave, convex)**
- **Collects bone shavings of appropriate size and thickness for graft integration**
- **Bone shavings contain well-preserved bone cells, particularly osteocytes, osteoblasts, osteoclasts and osteoprogenitor cells**

The Safescraper® Twist Pack of 3 **£119.70**

The Micross

Enhanced Performance and Efficiency

The Micross is a minimally invasive autogenous bone collector which allows clinicians to better harvest bone in narrow, difficult to reach areas.

Its excellent cutting performance and narrow profile provides for easy bone collection at the defect site, as well as in other intraoral sites using a tunneling technique. The bone tissue is directly collected with coagulated blood making the graft easy to handle and mold to the defect shape.

Minimally Invasive with Maximum Access

- **Exclusive micro-blade allows easy bone collection**
- **Designed to perform a minimally invasive tunneling surgical technique**
- **Effective on any bone surface (plane, concave, convex)**
- **Bone shavings contain well-preserved bone cells, particularly osteocytes, osteoblasts, osteoclasts and osteoprogenitor cells**



The Micross Single unit **£46.58**

Call your local Product Specialist for attractive savings.

Scotland and Northern England

Jill Pidgeon

E.mail: jill.pidgeon@geistlich.com
Tel: +44 (0) 7545 209 471

London & South East England

Nesh Bangard

E.mail: nesh.bangard@geistlich.com
Tel: +44 (0) 7714 704 764

Central England

Jitesh Patel

E.mail: jitesh.patel@geistlich.com
Tel: +44 (0) 7834 869 189

London & the Home Counties

Adam Jennings

E.mail: Adam.jennings@geistlich.com
Tel: +44 (0) 7843 643 158

South West England & South Wales

Sophia Knops

E.mail: sasha.smith@geistlich.com
Tel: +44 (0) 7912 487 217

Geistlich UK
Thorley House
Bailey Lane
Manchester Airport
Manchester, M90 4AB

Tel: +44 (0) 161 490 2038
Fax: +44 (0) 161 498 6988

orders@geistlich.co.uk
www.geistlich.co.uk